

Interreg



**Co-funded by
the European Union**

Meuse – Rhine (NL – BE – DE)

WORKSHOP

A Smarter Meuse-Rhine area

Corda Campus – 28.09.2022

Anna OZEROVA - Regional Antenna Limburg (NL)

Frederik LOY - Regional Antenna Limburg (B)

Interreg



Co-funded by
the European Union

Meuse – Rhine (NL – BE – DE)

Interreg Meuse- Rhine?

Interreg



Co-funded by
the European Union

Meuse – Rhine (NL – BE – DE)

Interreg Meuse-Rhine (NL-BE-DE)

What is Interreg?

Interreg is part of the **European Union's cohesion policy** and is financed by the **European Regional Development Fund (ERDF)**. This fund strengthens economic and social cohesion in the European Union by **eliminating imbalances between regions** and **promoting cross-border cooperation**.

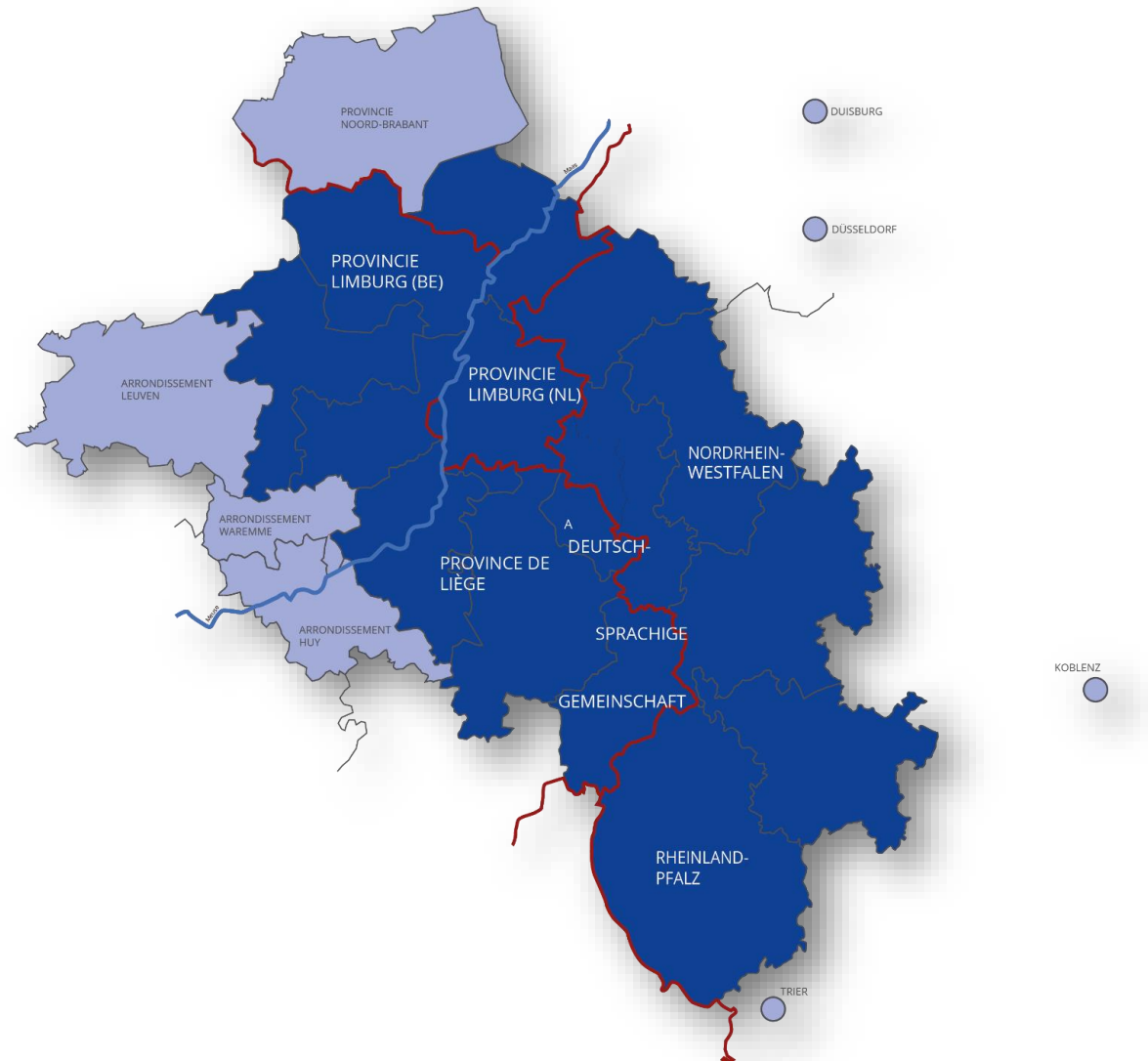
6th consecutive program, named Interreg Meuse-Rhine (NL-BE-DE)



Planned cooperation according to the principle of "**Functional Areas**" with:

- Arrondissement Leuven (B)
- Arrondissements Huy and Waremme (B)
- Region Zuidoost-Noord-Brabant (NL)
- Düsseldorf, Duisburg (DE)
- Koblenz, Trier (DE)

→ **Does not affect PO 6!**



Interreg



Co-funded by
the European Union

Meuse – Rhine (NL – BE – DE)

Content of the Programme

Interreg

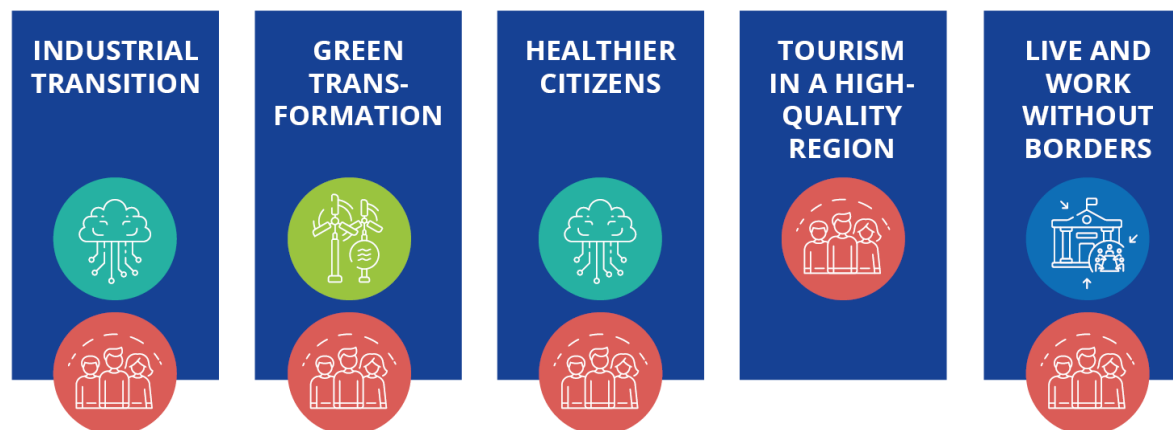


Co-funded by
the European Union

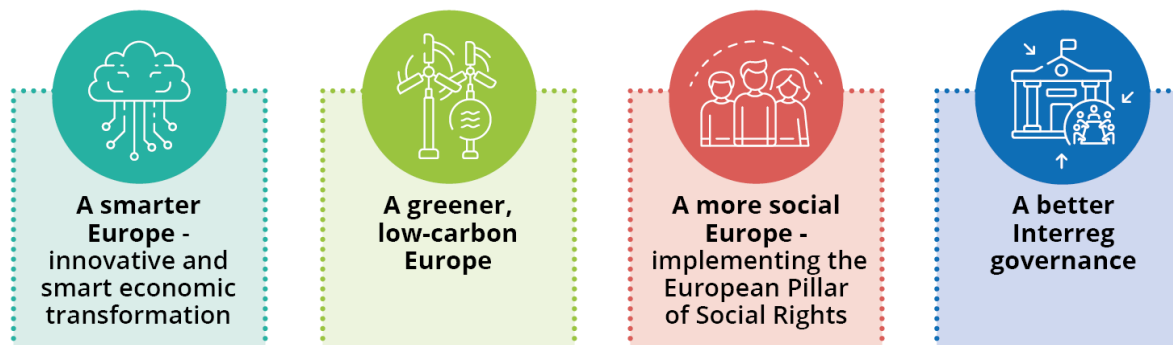
Meuse – Rhine (NL – BE – DE)

Content of the Programme

Our 5 grand societal challenges



4 priorities



Interreg

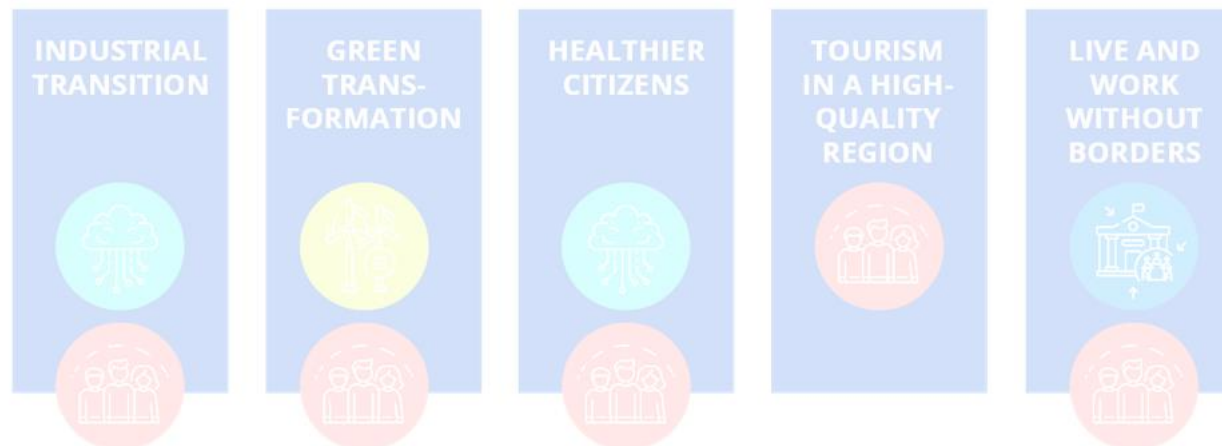


Co-funded by
the European Union

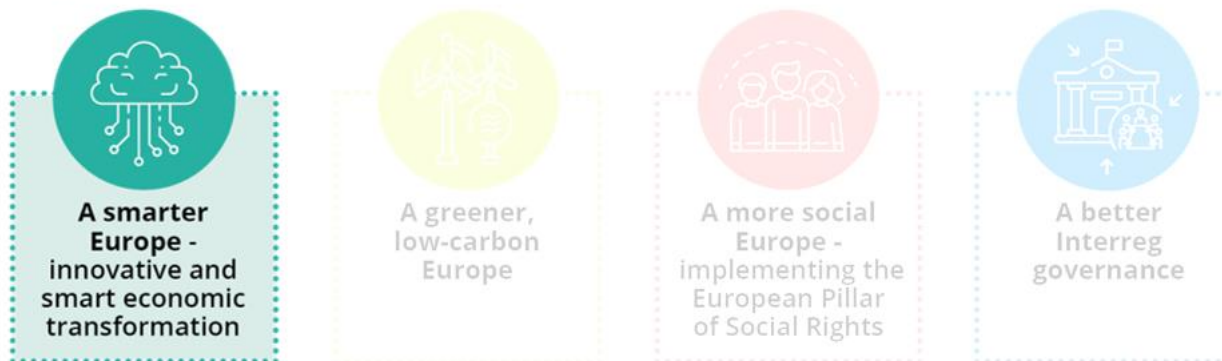
Meuse – Rhine (NL – BE – DE)

A Smarter Meuse-Rhine area

Our 5 grand societal challenges



4 priorities



Interreg



Co-funded by
the European Union

Meuse – Rhine (NL – BE – DE)

Priority 1



A Smarter Meuse-Rhine area:

- Promoting Industry 4.0 and key enabling technologies
- Developing and enhancing research and innovation capacities and the uptake of advanced technologies
- Enhancing sustainable growth and competitiveness of SMEs and job creation in SMEs, including by productive investments
- SO 1.ii en 1.iii

Interreg



Co-funded by
the European Union

Meuse – Rhine (NL – BE – DE)

Developing and enhancing research and innovation capacities and the uptake of advanced technologies



- Industrial Transition
- Healthier inhabitants

Interreg



Co-funded by
the European Union

Meuse – Rhine (NL – BE – DE)

Developing and enhancing research and innovation capacities and the uptake of advanced technologies



- development of innovations offering solutions, by supporting innovation and scaling-up projects between collaborating companies and/or knowledge institutions and/or healthcare organisations;
- market-oriented and/or cross-industry collaboration between SMEs and knowledge institutions on innovative solutions, in which public and private R&D capacity is linked: development of living labs, new facilities and instruments for innovation processes;
- (further) development of innovative cross-border value chains in order to market innovations within the transitions, taking into account the interoperability of the value chain;

Developing and enhancing research and innovation capacities and the uptake of advanced technologies



- development of a value added integrated supply chain ecosystem, stimulating technological and collaborative innovations between the logistics and manufacturing industry;
- support for living labs, and demonstration projects in the real environment, in which companies, knowledge institutions and end users work together on innovations that contribute to the societal challenges;
- social innovation projects aimed at achieving social renewal within the two societal challenges central to this SO. Examples: renewal processes in the field of cooperation in companies, aimed at improving production, new ways of thinking about topics and making trend-breaking ideas tangible, but also in governments and elsewhere in society to promote social cohesion or dynamism in relation to technological innovation;
- personalised health care (development of new diagnostic and therapeutic devices, value based health care.

Interreg



Co-funded by
the European Union

Meuse – Rhine (NL – BE – DE)

Enhancing sustainable growth and competitiveness of SMEs and job creation in SMEs, including by productive investments



- Industrial Transition
- Healthier inhabitants
- Green Transformation

Interreg



Co-funded by
the European Union

Meuse – Rhine (NL – BE – DE)

Enhancing sustainable growth and competitiveness of SMEs and job creation in SMEs, including by productive investments



- Collaboration: knowledge and training institution with the industry (lifelong learning)
- Development and implementation of an innovation scheme, stimulating sustainable cross-border development and cooperation on promising innovation projects between SMEs (business-to-business)
- Innovation projects adapting to changing circumstances, creating new solutions, generating new business;
- Digitalisation of products, processes and services (e-commerce and e-business);
- Cross-border innovation processes, technology transfer and business aimed at introducing new products and services to the market

Getting started

Interreg



Co-funded by
the European Union

Meuse – Rhine (NL – BE – DE)

Getting started



Define theme and check compatibility with program objectives



Reflect on specific challenges, necessary impacts and corresponding products/services (deliverables)



Search for cross-border partners → support from the Regional Antennas



Weigh up costs and financing: 50% EU contribution, raise remaining 50% yourself (possibly public co-financing -> contact the Regional Antennas)



Monitor information / updates of the program: [Home | Interreg Euregio Maas-Rijn](#)
(interregemr.eu)

Interreg



Co-funded by
the European Union

Meuse – Rhine (NL – BE – DE)

Getting started



If you need support, contact your **Regional Antenna:**

Province de Liège

- Axel Noel
- Cristina Jors
- Jessica Kriescher

Provincie Limburg (B)

- Frederik Loy

German-Speaking Community of Belgium

- Céline Marchal

Provincie Limburg (NL)

- Anna Ozerova

Region Aachen

- Fabian Thimm

Interreg



Co-funded by
the European Union

Meuse – Rhine (NL – BE – DE)

Questions

Interreg



Co-funded by
the European Union

Meuse – Rhine (NL – BE – DE)