

Interreg



**Co-funded by
the European Union**

Meuse – Rhine (NL – BE – DE)

WORKSHOP 2

A greener, low carbon Meuse-Rhine area

Corda Campus -28.09.2022
Room 5

Gesa REMMERT (Project Manager JS)
Axel NOEL (Project Manager RA Liège)

Interreg



Co-funded by
the European Union

Meuse – Rhine (NL – BE – DE)

Welcome



Axel NOEL
Project Manager RA Liège



Gesa REMMERT
Project Manager JS

Interreg



Co-funded by
the European Union

Meuse – Rhine (NL – BE – DE)

Agenda

Welcome and introduction

Presentation of priority 2 and specific objectives

Questions & Answers

End of the session

Interreg



Co-funded by
the European Union

Meuse – Rhine (NL – BE – DE)

What is Interreg ?

Interreg is part of the **European Union's cohesion policy** and is financed by the **European Regional Development Fund (ERDF)**. This fund strengthens economic and social cohesion in the European Union by **eliminating imbalances between regions** and **promoting cross-border cooperation**.



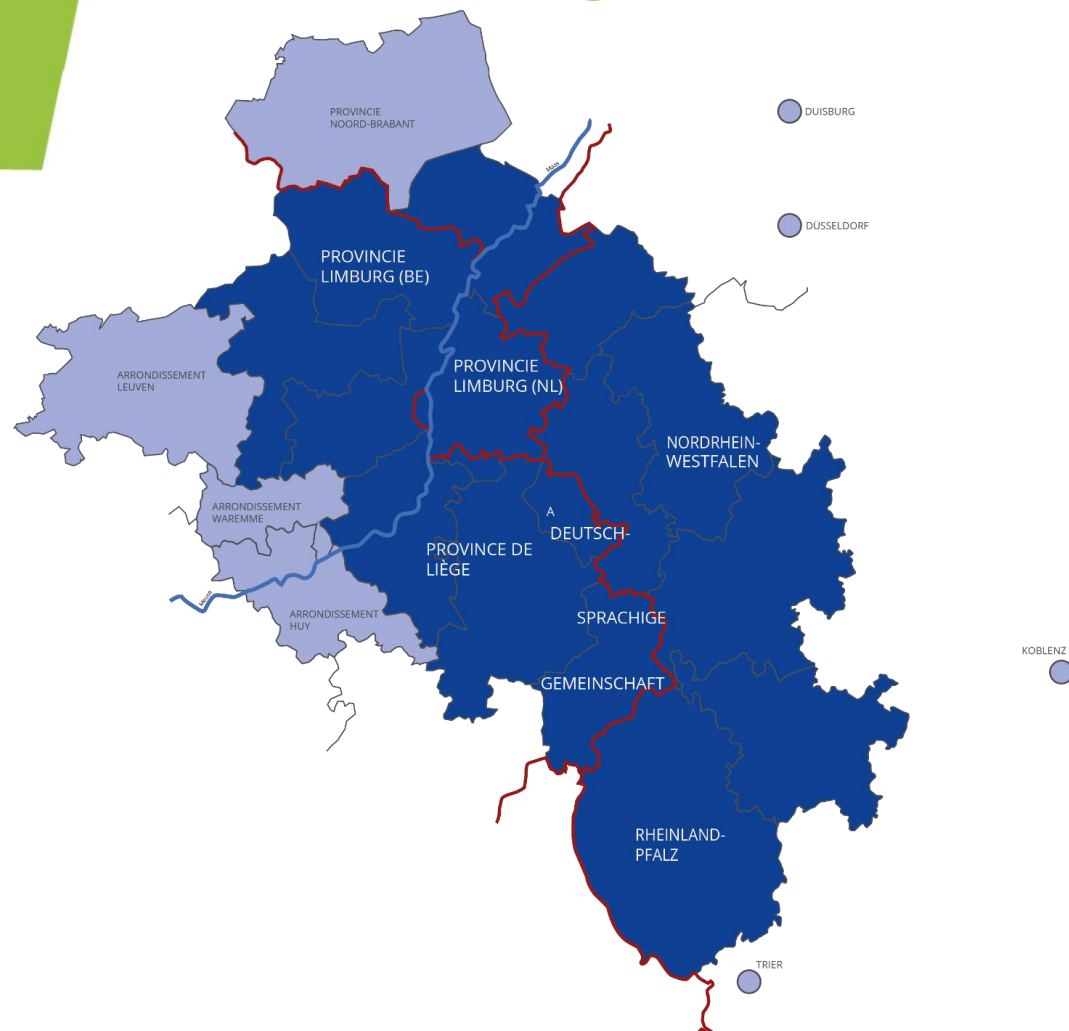
Interreg



Co-funded by
the European Union

Meuse – Rhine (NL – BE – DE)

Territory



Interreg

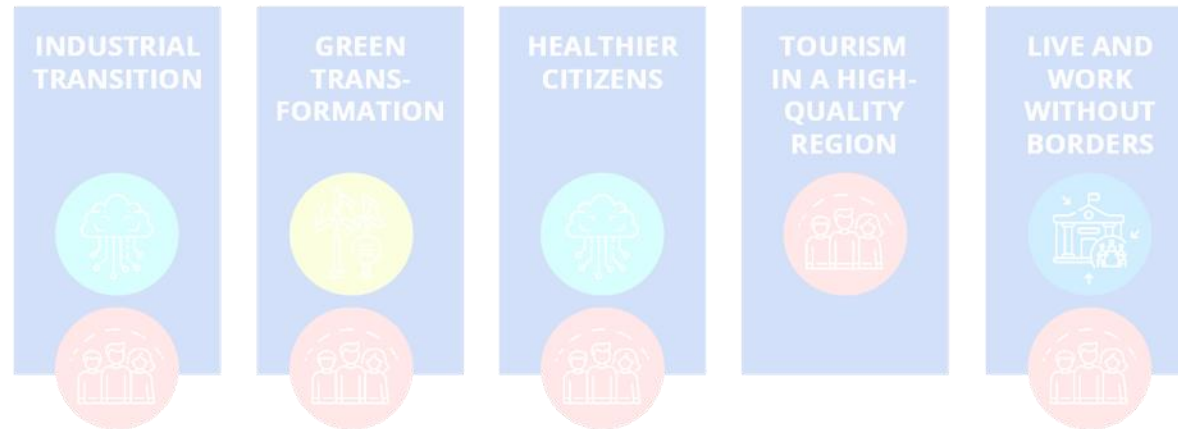


Co-funded by
the European Union

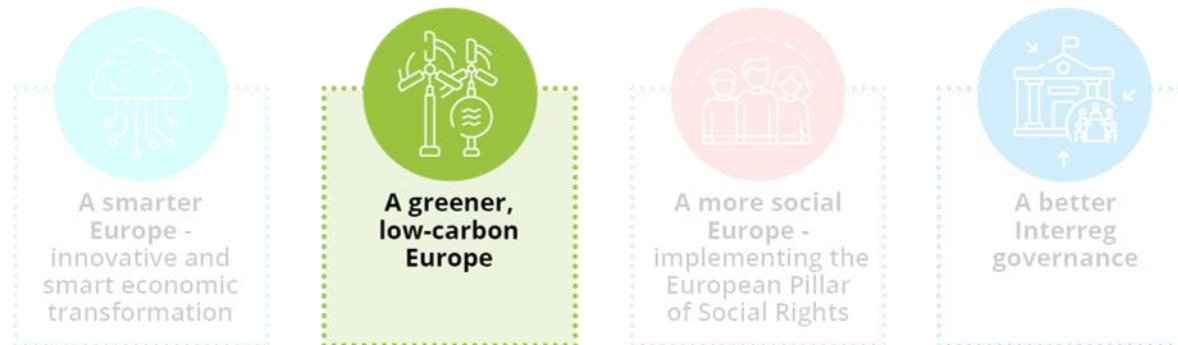
Meuse – Rhine (NL – BE – DE)

Content

Our 5 grand societal challenges



4 priorities



Priority 2



A greener, low carbon Meuse-Rhine area:

- Renewable energy
- Adaptation to climate change
- Circular energy economy

Interreg



Co-funded by
the European Union

Meuse – Rhine (NL – BE – DE)

Specific objective



Promoting renewable energy

Interreg



Co-funded by
the European Union

Meuse – Rhine (NL – BE – DE)

Type of actions

- **Close-to-market** eco-innovation **projects** from SMEs concerning renewable energy. For example, developing **business cases**, **pilot** and **demonstration projects** in relevant environments, and translating innovations into scalable **products and services**;
- Innovative processes by which **multiple enterprises** within a shared market segment **collaboratively** plan, implement and manage renewable energy in a way that **increases the share of renewable energy** in sectors that are more difficult **to decarbonise**;
- **Cross-border cooperation** and knowledge exchange on topics like hydrogen, building integrated PV, large scale (energetic and circular) **renovation of buildings**, whether or not in combination with how to connect to smart grids or heat networks, green heat/cold and woodchip production;

Interreg



Co-funded by
the European Union

Meuse – Rhine (NL – BE – DE)

Type of actions

- Experimentation with **new models for generation of renewable energy**, and testing and demonstrating these renewable energy solutions in a real environment. This may lead to the identification of **missing links** in the cross-border network and the development of **local experimentation** solutions with side-by-side projects along the border, as well as on how to **connect** renewable energy **systems** across the border. **SMEs** and **inhabitants** in the Meuse-Rhine area also need **support** with setting up innovative organisational structures for organising and financing investments in sustainable energy generation, overcoming differences in **regulations**;
- Investigating possibilities for **cross-border exchange of energy** via a direct or an alternating current low- or medium-voltage connection between **neighbouring communities**, taking into account the cross-border **market coupling mechanism**.

Target groups/beneficiaries

- **SMEs**, including innovative start-ups and scale-ups;
- Research and educational **institutes**;
- **Regulators** and e-grid infrastructure owners;
- **Intermediary organisations**;
- **Civil society groups** making the energy transition visible and tangible on a local scale: **energy cooperative** and other forms of social organisation (e.g., foundations, NGOs, Energieagentur).

Interreg



Co-funded by
the European Union

Meuse – Rhine (NL – BE – DE)

Specific objective



Promoting climate change adaptation and disaster risk prevention and resilience

Interreg



Co-funded by
the European Union

Meuse – Rhine (NL – BE – DE)

Type of actions

- Development of joint strategies and action plans on a cross-border scale stimulating organisations such as governments, enterprises, knowledge institutes, NGOs and local communities to implement for example **flood protection measures**, **storm** and **drought** protection measures, **heat action plans** and better **water management** and **water resource** conversation;
- **Market-oriented cooperation** and knowledge exchange between SMEs and knowledge institutes regarding **climate change adaptation** and **disaster risk reduction**, in which public and private R&D capacity is linked. This involves facilitating **cross-border networks** in tackling local and specific climate adaptation and disaster resilience challenges which are widely applicable;

Interreg



Co-funded by
the European Union

Meuse – Rhine (NL – BE – DE)

Type of actions

- **Living labs and demonstration projects** in the real environment, in which companies, knowledge institutes and end users work together on innovations that contribute to climate change adaptation and disaster resilience (e.g., flood protection and water retention measures, resilience of critical infrastructure);
- Empowering **energy communities / positive energy districts** on a cross-border scale to adapt to climate change. This involves more low-cost solutions to anticipate and mitigate climate change impacts. These can complement existing adaptation efforts, and better engage local communities in private climate change prevention actions, protecting their environments. For example, promoting the installation of green roofs to limit surface water runoff and reducing temperature in the built environment. Or a community-led plantation of trees in public areas;

Interreg



Co-funded by
the European Union

Meuse – Rhine (NL – BE – DE)

Type of actions

- Cross-border **information sessions, counselling and advanced training**, to raise awareness and provide specific insights in the consequences of **climate change phenomena**, cascading effects and compound disaster risk (e.g., for the agricultural or the health sector) and support public risk awareness and preparedness.

Interreg



Co-funded by
the European Union

Meuse – Rhine (NL – BE – DE)

Target groups/beneficiaries

- Governmental organisations (national, regional or local authorities);
- Enterprises;
- Research and educational institutes;
- Intermediary organisations;
- NGOs;
- Local communities / inhabitant groups.

Interreg



Co-funded by
the European Union

Meuse – Rhine (NL – BE – DE)

Specific objective



Promoting the transition to a circular and resource efficient economy

Interreg



Co-funded by
the European Union

Meuse – Rhine (NL – BE – DE)

Type of actions

- Development of new **circular products**, circular **processes** and circular **business models**;
- **Close-to-market** eco-innovation **projects**, technology transfer and cooperation between **companies** aimed at transitioning towards a circular economy. Consider, for example, cooperation and knowledge exchange on topics like **re-using resources**, **material cycles**, **feedstock transition**, large scale (energetic and circular) **renovation of buildings**, and **circular and smart buildings**;
- **Living labs and demonstration projects** in the real environment, in which **companies**, knowledge **institutes** and end **users** work together on innovations that contribute to the circular economy ;

Interreg



Co-funded by
the European Union

Meuse – Rhine (NL – BE – DE)

Type of actions

- Community-based responses and associated physical infrastructure, such as **makerspaces, fab labs and community technology workshops** to **complement the industrial-scale** response regarding circular principles. This includes promoting reducing resource consumption through sharing, fix-it clinics and repair cafes, digital fabrication techniques, open source machines converting waste into filaments for reuse, and convening events and activities to challenge designers and suppliers into thinking creatively about how their waste resources could be used in projects by others;
- Creating partnerships for industrial symbiosis across borders on a (eu)regional scale, aimed at developing concrete projects that go beyond symbiosis; for example: **new business models, functional economy, responsible consumption, sustainable procurement, circular design, and reverse logistics.**

Interreg



Co-funded by
the European Union

Meuse – Rhine (NL – BE – DE)

Target groups/beneficiaries

- **SMEs**, including innovative start-ups and scale-ups;
- Research and educational **institutes**;
- Makerspaces and **fab/living labs**;
- Civil **society groups** making the energy transition visible and tangible on a local scale: energy cooperative and other forms of social organisation (e.g. foundations, NGOs).

Interreg



Co-funded by
the European Union

Meuse – Rhine (NL – BE – DE)

Global budget

| Financing ERDF (50%) | Amounts |
|---|-----------------------|
| Promoting renewable energy | 10.956.794 EUR |
| Promoting climate change adaptation and disaster risk prevention and resilience | 12.808.865 EUR |
| Promoting the transition to a circular and resource efficient economy | 13.536.039 EUR |
| Total of Priority 2 | 37.301.698 EUR |

Interreg



Co-funded by
the European Union

Meuse – Rhine (NL – BE – DE)

Getting started

Interreg



Co-funded by
the European Union

Meuse – Rhine (NL – BE – DE)

Getting started

-  Define **theme** and **check compatibility** with programme objectives.
-  Reflect on **concrete challenges**, necessary **impacts** and corresponding **products/services**.
-  Search for **cross-border partners** → support from the Regional Antennas.
-  Weigh up **costs** and **financing**: 50% EU contribution, raise remaining 50% yourself (possibly public co-financing -> contact the Regional Antennas).
-  Monitor information / updates of the programme.

Interreg



Co-funded by
the European Union

Meuse – Rhine (NL – BE – DE)

Regional Antennas



The Netherlands - Maastricht

Anna OZEROVA

Germany - Aachen

Fabian THIMM

OstBelgien - Eupen

Céline MARCHAL

Michel MARGRAFF

Belgium - Hasselt

Frédéric LOY

Belgium - Liège

Axel NOEL

Cristina JORS

Jessica KRIESCHER

Interreg



Co-funded by
the European Union

Meuse – Rhine (NL – BE – DE)

For follow-up and questions please contact your regional antenna !

The Netherlands – Maastricht

Anna OZEROVA - al.ozerova@prvlimburg.nl

Germany – Aachen

Fabian THIMM - thimm@regionaachen.de

OstBelgien – Eupen

Céline MARCHAL - celine.marchal@dgov.be

Michel MARGRAFF - michel.margraff@dgov.be

Belgium – Hasselt

Frédéric LOY - frederik.loy@limburg.be

Belgium – Liège

Axel NOEL - axel.noel@liege-interregmeuserhin.eu

Cristina JORS - cristina.jors@liege-interregmeuserhin.eu

Jessica KRIESCHER - secretariat@liege-interregmeuserhin.eu

Interreg



Co-funded by
the European Union

Meuse – Rhine (NL – BE – DE)

Interreg Meuse-Rhine Team



Interreg



Co-funded by
the European Union

Meuse – Rhine (NL – BE – DE)



Interreg



Co-funded by
the European Union

Meuse – Rhine (NL – BE – DE)



Interreg



Co-funded by
the European Union

Meuse – Rhine (NL – BE – DE)

Questions and Follow-up.

Please contact us !

interregemr.eu

Interreg



Co-funded by
the European Union

Meuse – Rhine (NL – BE – DE)

Interreg



**Co-funded by
the European Union**

Meuse – Rhine (NL – BE – DE)